

Crews will be based in a small temporary self-contained camp located on the drill site. Up to 50 people will be on site at any one time, working two 12-hour shifts.

Once the well has been completed it will be plugged with cement, capped and a marker plate installed at ground level, along with a post to mark the spot.

The mud sump and water pond will be emptied, and the site will be inspected for removal of all waste and rehabilitated to the pre-drilling standard.

Following the drilling program, core samples and other data collected from the well will be analysed. This analysis may take up to six months.

Depending on the results of the proposed data well, further research activities, including 3D seismic surveys and additional data wells, may be conducted in the Harvey and Waroona Shires. Landholders and neighbours will be consulted before any work commences.



The Century Rig 7 which will be used to drill the Harvey 1 Well.

For enquiries regarding the data well, contact:

**Alan Millar**

Manager Petroleum Geology  
Geological Survey  
Department of Mines and Petroleum

Mineral House, 100 Plain Street  
East Perth, Western Australia 6004

Tel: +61 8 9222 3841

Email: alan.millar@dmp.wa.gov.au

Government of Western Australia  
Department of Mines and Petroleum  
Mineral House, 100 Plain Street  
East Perth, Western Australia 6004

Tel: +61 8 9222 3333

Fax: +61 8 9222 3862

Email: dmp@dmp.wa.gov.au

[www.dmp.wa.gov.au](http://www.dmp.wa.gov.au)

Printed November 2011  
DMPNOV11\_1635



Government of Western Australia  
Department of Mines and Petroleum



## Data Well Drilling Operations

Riverdale Road, Cookernup



## Data Well Drilling Summary

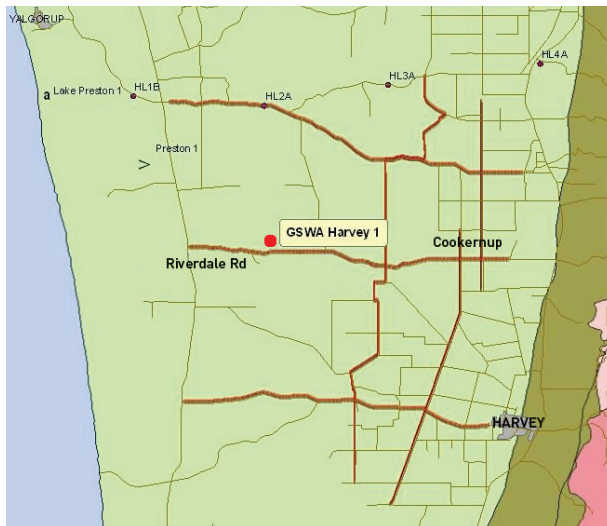
A site has been selected to drill a 3,000 metre deep data well. The purpose of the well is to gather data to assess the capacity and viability of the Lesueur Sandstone Formation for CO<sub>2</sub> geosequestration (carbon capture and storage). It will also provide data on geological formations, geothermal gradients, petroleum prospectivity and water resources within the local area.

The well is being drilled following data collection from seismic survey work completed by the Department of Mines and Petroleum's Geological Survey Division (GSD) in March 2011.

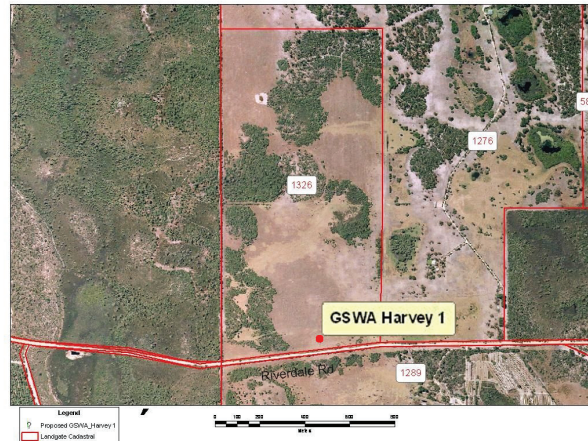
The drilling program is jointly funded by State and Federal Government in collaboration with GSWA and Geoscience Australia.

## Location

Lot 1326 Riverdale Road, Cookernup has been selected as the preferred site to drill the data well.



Location of completed seismic lines and proposed GSWA Harvey 1 well.



Location of GSWA Harvey 1 Well on Lot 1326 Riverdale Road, Cookernup.

Aztech Well Construction is the drilling project manager. The drill is being provided by Century Energy Services Pty Ltd.

The main purpose of the drilling program is to obtain data on the Lesueur Sandstone Formation. The stratigraphic well is positioned to intersect the Sandstone Formation at predicted depths of less than three kilometres.

In December 2011, site preparation works will commence. Over a 2-3 week period, access roads and a rig site area of about 115m x 120m will be constructed along with a nearby area where a temporary camp will be located. The drilling rig will then be transported to the well location and installed in preparation for drilling operations to commence in mid January 2012. The rig crew and associated contractor personnel will move into the temporary camp at the same time as the rig arrives. The drilling program is scheduled to take up to 40 days to complete.

Drilling will be conducted 24 hours a day. The drilling operation will be managed in accordance with best practice health, safety and environmental requirements to minimise impacts.

## What you will see

Equipment and infrastructure for the proposed drilling operations include:

- Drill rig and equipment
- Support vehicles
- Diesel generators
- Temporary fencing, lighting and office accommodation
- A mud sump (pond) of approximately 30 metres x 30 metres x two metres deep to take drill cuttings from the well
- A water bore
- A water pond of approximately 30 metres x 30 metres x two metres deep, with water coming from the water bore. Approximately 2000 kilolitres of water will be obtained during the operation.
- Accommodation camp

## What will happen

- Site preparation
- Access road to site
- A water bore drilling rig will be used to drill both a water bore and a 13 3/8 inch diameter casing to be set and cemented to 50 metres
- Drilling rig set up
- Century Rig 7 to drill 12.25 inch diameter hole to approximately 840 metres which will be cased and cemented using 9 5/8 inch diameter casing
- Geophysically log open hole
- Drill 8.5 inch hole to approximately 3000 metres and remove approximately 300 metres for core samples
- Log open hole section
- Plug well
- Pack up rig (five to seven days)
- Rehabilitate site.